

Front panel



1. Backlit LCD display.
2. Direct access key for currents and test function.
3. Direct access key for voltages and frequency.
4. Direct access key for active, reactive, and apparent powers and power factor.
5. Direct access key for maximum and average current and power values.
6. Direct access key for harmonic values.
7. Direct access key for energies, hour meter and programming menu.

Plug-in modules

DIRIS® A40










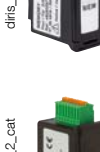

diris_773_a

DIRIS® A41*



diris_774_a

* with a factory fitted neutral CT module.

| | |
|---|---|
|  | <p>Pulse outputs</p> <p>2 configurable pulse outputs (type, weight and duration) on \pm kWh, \pm kvarh and kVAh.</p> |
|  | <p>Communication MODBUS®</p> <p>RS485 link with MODBUS® protocol (speed up to 38400 bauds).</p> |
|  | <p>PROFIBUS® DP communication</p> <p>SUB-D9 link with PROFIBUS® DP protocol (speed up to 12 Mbauds).</p> |
|  | <p>Ethernet communication</p> <ul style="list-style-type: none"> • Ethernet connection with MODBUS TCP or MODBUS RTU over TCP protocol. • Embedded Webserver function⁽¹⁾. |
|  | <p>Ethernet communication with RS485 MODBUS gateway</p> <ul style="list-style-type: none"> • Ethernet connection with MODBUS TCP or MODBUS RTU over TCP protocol. • Connection of 1 to 247 RS485 MODBUS slaves. • Embedded Webserver function⁽¹⁾. |
|  | <p>Analogue outputs</p> <p>A maximum of 2 modules may be connected, providing up to 4 analogue outputs. Per module 2 outputs assignable to:</p> <p>3I, In, 3V, 3U, F, \pm ΣP, \pm ΣQ, ΣS, ΣPFL/C, I sys, Vsys, Usys, Ppred, Q pred, Spred, T°C internal, T°C 1, T°C 2, T°C3 and to 30 VDC power supply.</p> |
|  | <p>2 inputs - 2 outputs</p> <p>A maximum of 3 modules may be connected, providing up to 6 inputs and 6 outputs. Per module 2 outputs assignable to:</p> <ul style="list-style-type: none"> - monitoring: 3I, In, 3V, 3U, F, \pm ΣP, \pm ΣQ, ΣS, ΣPFL/C, THD 3I, THD In, THD 3V, THD 3U, Ppred, Qpred, Spred, internal T°C, T°C 1, T°C2, T°C3 and hour meter, - remote control, - timed remote control. - 2 inputs for pulse metering. |
|  | <p>Memory</p> <ul style="list-style-type: none"> • Storing up to a maximum of 62 days of P+, P-, Q+, Q- with an internal or external synchronisation signal of 5, 8, 10, 15, 20, 30 and 60 minutes. • Storing of 10 hour-dated last alarms. • Storing of the last minimum and maximum instantaneous values for 3U, 3V, 3I, In, F, ΣP\pm, ΣQ\pm, ΣS, THD 3U, THD 3V, THD, 3U, THD, 3V, THD, 3I, THD In. • Storing of 3U, 3V and F average values based on synchronisation function (maximum 60 days). |
|  | <p>Temperature⁽²⁾</p> <p>Temperature indication:</p> <ul style="list-style-type: none"> - internal, - external sensor PT 100 (T°C 1), - external sensor PT 100 (T°C 2), - external sensor PT 100 (T°C 3). |

(1) See "Management software for DIRIS" page 618.
 (2) See "external sensor PT 100" page 600.

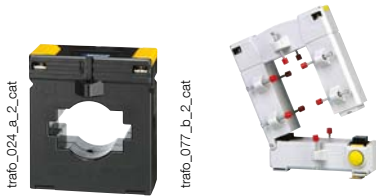
DIRIS A40/A41

Multifunction meters - PMD

multi-measurement meter - dimensions 96 x 96 mm

Accessories

Current transformers
(see page 584)



IP65 protection

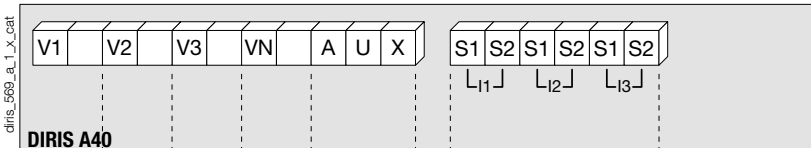


Panel mounting kit for a 144 x 96 mm cut-out



Terminals

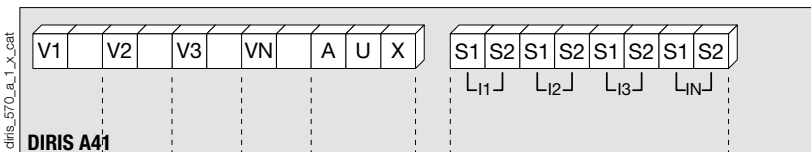
DIRIS A40



S1 - S2: current inputs

AUX: auxiliary power supplies U_s
V1 - V2 - V3 - VN: voltage inputs

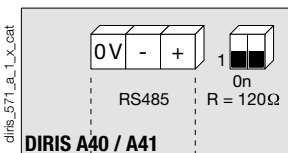
DIRIS A41



S1 - S2: current inputs

AUX: auxiliary power supplies U_s
V1 - V2 - V3 - VN: voltage inputs

Communication module

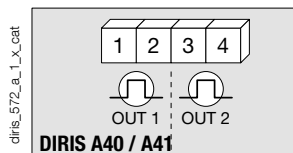


DIRIS A40 / A41

RS485 link.

R = 120 Ω : selectable internal resistance for RS485 end of line termination.

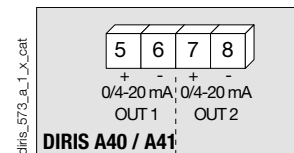
Pulse output module



DIRIS A40 / A41

1 - 2: pulse output n°1.
3 - 4: pulse output n°2.

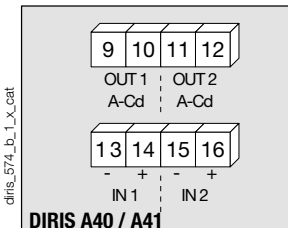
Analogue output module



DIRIS A40 / A41

5 - 6: analogue output n°1.
7 - 8: analogue output n°2.

2 inputs / 2 outputs module



DIRIS A40 / A41

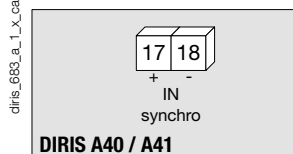
9 - 10: relay output n°1.

11 - 12: relay output n°2.

13 - 14: opto input n°1.

15 - 16: opto input n°2.

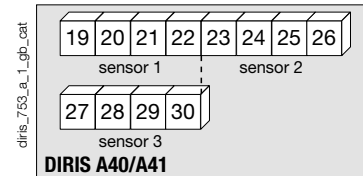
Memory module



DIRIS A40 / A41

17 - 18: synchronisation input.

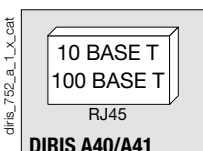
Temperature module



DIRIS A40/A41

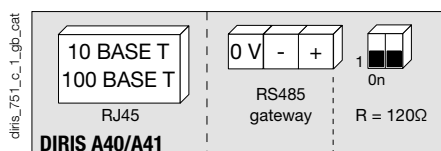
| Sensor 1 | Sensor 2 | Sensor 3 |
|-----------|-----------|-----------|
| 19: red | 23: red | 27: red |
| 20: red | 24: red | 28: red |
| 21: white | 25: white | 29: white |
| 22: white | 26: white | 30: white |

Ethernet Module



DIRIS A40/A41

Ethernet module + RS485 MODBUS gateway



DIRIS A40/A41

Electrical characteristics

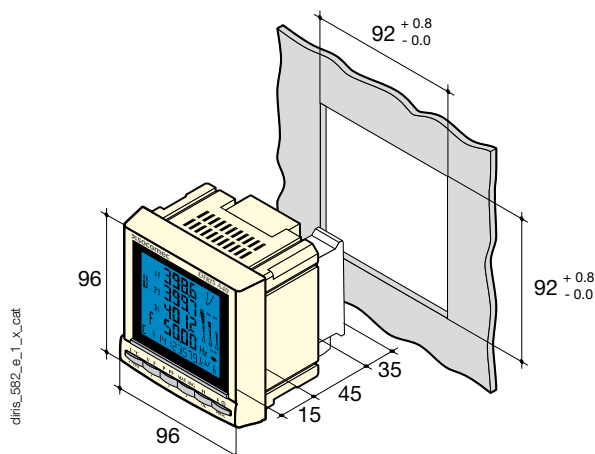
| Current measurement on insulated inputs (TRMS) | |
|--|---------------------------------|
| Via CT primary | 9 999 A |
| Via CT secondary | 1 or 5 A |
| Measurement range | 0 ... 11 kA |
| Input consumption | ≤ 0.1 VA |
| Measurement updating period | 1 s |
| Accuracy | 0.2 % |
| Permanent overload | 6 A |
| Intermittent overload | 10 I _n for 1 s |
| Voltage measurements (TRMS) | |
| Direct measurement between phases | 50 ... 700 VAC |
| Direct measurement between phase and neutral | 28 ... 404 VAC |
| VT primary | 500 000 VAC |
| VT secondary | 60, 100, 110, 173, 190 VAC |
| Frequency | 50 / 60 Hz |
| Input consumption | ≤ 0.1 VA |
| Measurement updating period | 1 s |
| Accuracy | 0.2 % |
| Permanent overload | 800 VAC |
| Current-voltage product | |
| Limitation for 1A CT | 10 000 000 |
| Limitation for 5A CT | 10 000 000 |
| Power measurement | |
| Measurement updating period | 1 s |
| Accuracy | 0.5 % |
| Power factor measurement | |
| Measurement updating period | 1 s |
| Accuracy | 0.5 % |
| Frequency measurement | |
| Measurement range | 45 ... 65 Hz |
| Measurement updating period | 1 s |
| Accuracy | 0.1 % |
| Energy accuracy | |
| Active (according to IEC 62053-22) | Class 0.5 S |
| Reactive (according to IEC 62053-23) | Class 2 |
| Auxiliary power supply | |
| Alternating voltage | 110 ... 400 VAC |
| AC tolerance | ± 10 % |
| Direct voltage | 120 ... 350 VDC / 12 ... 48 VDC |
| DC tolerance | ± 20 % / - 6 ... + 20 % |
| Frequency | 50 / 60 Hz |
| Consumption | ≤ 10 VA |

| 2 inputs / 2 outputs module: Outputs (alarms / control) | |
|---|-----------------------------------|
| Number of relays | 2 ⁽¹⁾ |
| Type | 250 VAC - 5 A - 1150 VA |
| 2 inputs / 2 outputs module: Phototransistor inputs | |
| Number | 2 ⁽¹⁾ |
| Power supply | 10 ... 30 VDC |
| Minimum signal width | 10 ms |
| Minimum duration between 2 pulses | 18 ms |
| Type | phototransistors |
| Pulse output module | |
| Number of relays | 2 |
| Type | 100 VDC - 0.5 A - 10 VA |
| Max. number of operations | ≤ 10 ⁸ |
| Analogue output module | |
| Number of outputs | 2 ⁽²⁾ |
| Type | insulated |
| Range | 0 / 4 ... 20 mA |
| Load resistance | 600 Ω |
| Maximum current | 30 mA |
| MODBUS communication module | |
| Link | RS485 |
| Type | 2 ... 3 half duplex wires |
| Protocol | MODBUS RTU |
| MODBUS [®] speed | 4800 ... 38400 bauds |
| PROFIBUS-DP communication module | |
| Link | SUB-D9 |
| Protocol | PROFIBUS [®] DP |
| PROFIBUS [®] speed | 9.8 kbauds ... 12 Mbauds |
| Ethernet communication module | |
| Connection | RJ45 |
| Speed | 10 base T / 100 base T |
| Protocol | MODBUS TCP or MODBUS RTU over TCP |
| Temperature module (inputs) | |
| Type | PT100 |
| Connection | 2, 3 or 4 wires |
| Dynamic | - 20 ... 150 °C |
| Accuracy | ±1 digit |
| Maximum length | 300 cm |
| Operating conditions | |
| Operating temperature | - 10 ... + 55 °C |
| Storage temperature | - 20 ... + 85 °C |
| Relative humidity | 95 % |

(1) Max. 3 modules / DIRIS.

(2) Max. 2 modules / DIRIS.

Case



| | |
|--|-----------------------------|
| Type | panel mounting |
| Dimensions W x H x D | 96 x 96 x 60 mm |
| Case degree of protection | IP30 |
| Front degree of protection | IP52 |
| Display type | backlit LCD display |
| Terminal blocks type | fixed or plug-in |
| Voltage and other connection cross-section | 0.2 ... 2.5 mm ² |
| Current connection cross-section | 0.5 ... 6 mm ² |
| Weight | 400 g |

DIRIS A40/A41

Multifunction meters - PMD

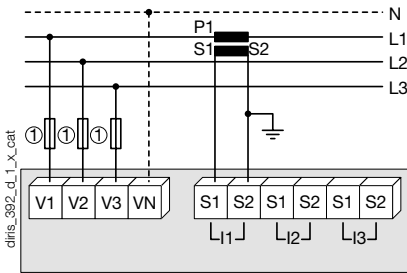
multi-measurement meter - dimensions 96 x 96 mm

Connections

Recommendation: When disconnecting the DIRIS, the secondary of each current transformer must be short-circuited. This operation can be carried out automatically by a SOCOMEC PTI, an accessory which is included in this catalogue. Please consult us. In TNC neutral systems it is recommended to use the functional earth module.

Low voltage balanced network for DIRIS A40

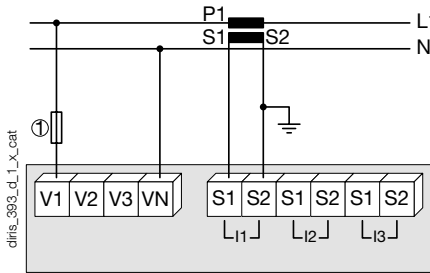
3/4 wires with 1 CT



Use of 1 CT reduces by 0.5% the accuracy of the phases, the current of which is worked out by vector calculation.

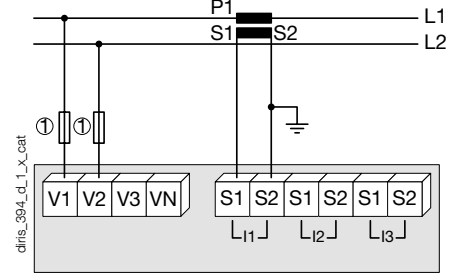
1. Fuses 0.5 A gG / 0.5 A class CC.

Single-phase



1. Fuses 0.5 A gG / 0.5 A class CC.

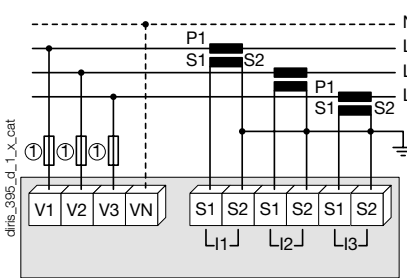
Two-phase



1. Fuses 0.5 A gG / 0.5 A class CC.

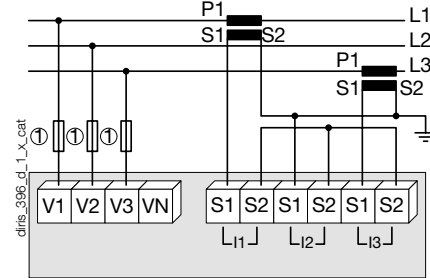
Low voltage unbalanced network for DIRIS A40

3/4 wires with 3 CTs



1. Fuses 0.5 A gG / 0.5 A class CC.

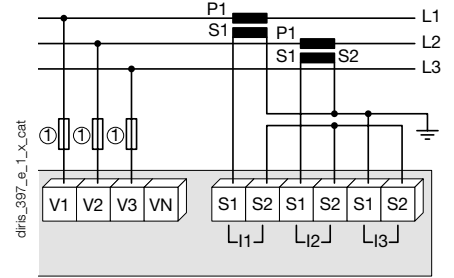
3 wires with 2 CTs



Use of 2 CTs reduces by 0.5% the accuracy of the phases, the current of which is worked out by vector calculation.

1. Fuses 0.5 A gG / 0.5 A class CC.

3 wires with 2 CTs

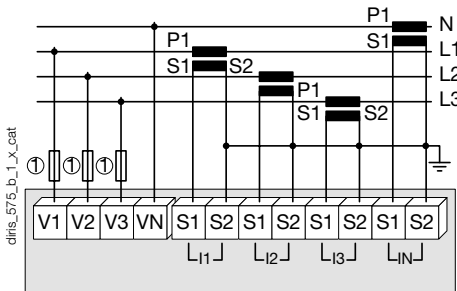


Use of 2 CTs reduces by 0.5% the accuracy of the phases, the current of which is worked out by vector calculation.

1. Fuses 0.5 A gG / 0.5 A class CC.

Low voltage unbalanced network for DIRIS A41

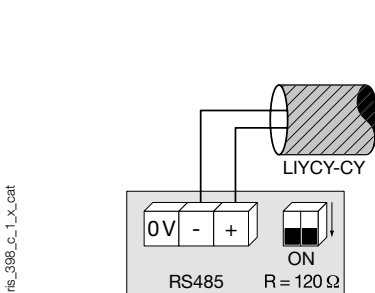
4 wires with 4 CTs



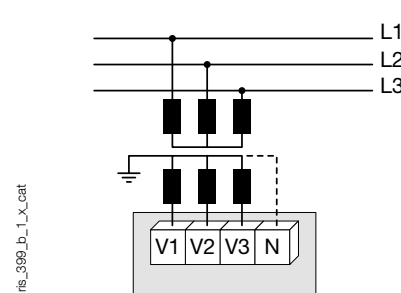
1. Fuses 0.5 A gG / 0.5 A class CC.

Additional information

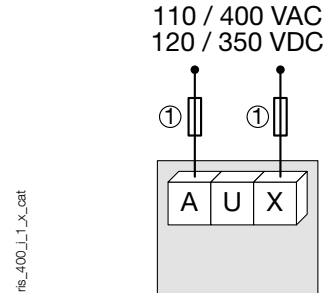
Communication via RS485 link



Connection of voltage transformer for HV networks



AC & DC auxiliary power supply



1. Fuses 0.5 A gG / 0.5 A class CC.

References

| Basic device | DIRIS A40 | | DIRIS A41 with CT on the neutral |
|--|------------------|--|----------------------------------|
| Auxiliary power supply U_s | Reference | | Reference |
| 110 ... 400 VAC / 120 ... 350 VDC | 4825 0201 | | 4825 0202 |
| 12 ... 48 VDC | 4825 1201 | | 4825 1202 |
| Options | | | |
| Plug-in modules⁽¹⁾ | Reference | | Reference |
| Pulse outputs | 4825 0090 | | 4825 0090 |
| RS485 MODBUS [®] communication | 4825 0092 | | 4825 0092 |
| Analogue outputs | 4825 0093 | | 4825 0093 |
| 2 inputs / 2 outputs | 4825 0094 | | 4825 0094 |
| Communication Sub D9 PROFIBUS [®] DP ⁽²⁾ | 4825 0205 | | 4825 0205 |
| Memory | 4825 0097 | | 4825 0097 |
| Embedded Webserver function ⁽²⁾ . | 4825 0203 | | 4825 0203 |
| Ethernet communication + RS485 MODBUS gateway (Embedded Webserver function) ⁽²⁾ | 4825 0204 | | 4825 0204 |
| Temperature inputs | 4825 0206 | | 4825 0206 |

(1) Ease of integration for additional functions (maximum 4 slots on A40 and 3 on A41).

(2) Dimension of the plug-in module: 2 slots.

| Accessories | To be ordered in multiples of | Reference | To be ordered in multiples of | Reference |
|--|-------------------------------|------------------|-------------------------------|------------------|
| Description of accessories | | | | |
| IP65 protection | 1 | 4825 0089 | 1 | 4825 0089 |
| Panel mounting kit for a 144 x 96 mm cut-out | 1 | 4825 0088 | 1 | 4825 0088 |
| Fuse disconnect switches for the protection of voltage inputs (type RM) 3 poles | 4 | 5601 0018 | 4 | 5601 0018 |
| Fuse disconnect switches for the protection of the auxiliary supply (type RM) 1 pole + neutral | 6 | 5601 0017 | 6 | 5601 0017 |
| Fuse type gG 10 x 38 0.5 A | 10 | 6012 0000 | 10 | 6012 0000 |
| Current transformer range | 1 | see page 584 | 1 | see page 584 |
| Ferrite to be associated with communication modules | 1 | 4899 0011 | | 4899 0011 |
| Temperature sensor PT100 - M6 screw type | 1 | 4825 0208 | 1 | 4825 0208 |
| Temperature sensor PT100 - M6 eyelet type | 1 | 4825 0209 | 1 | 4825 0209 |
| Management software for DIRIS | | | | see page 618 |

Expert Services

- > Study, definition, advice, implementation, maintenance and training... Our experts "Expert Services" offer complete support for the success of your project.

