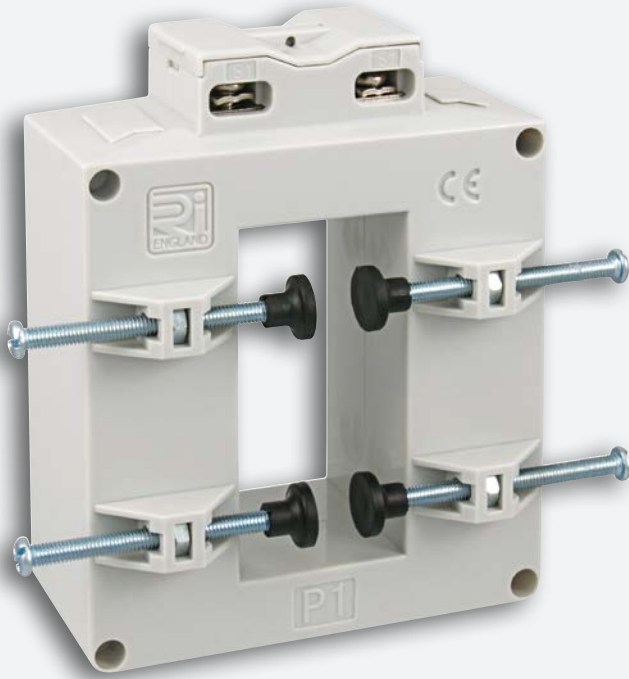


## RI-CT120 Series

### Single Phase Moulded Case Current Transformers



- From 150A to 2000A Primary currents
- 5A or 1A Secondary output
- 90mm width
- 32 x 65mm aperture
- Sealable terminal cover
- Supplied with Busbar fixings
- Compact design
- Indication of primary current flow (arrows on case body)

65 x 32mm

#### Product Description

The RI-CT120 Series forms part of a large family of solid core single phase moulded case current transformers from Rayleigh Instruments.

These transformers are suitable for monitoring current flow in commercial, industrial or utility applications. They are designed to connect any standard metering or relay product requiring a 5A or 1A output and are available with Primary current input ranges from 150A to 2000A

The RI-CT120 Series have been designed for ease of installation and are supplied with Busbar fixings. They also have clear markings moulded into the case to indicate the correct direction of primary current flow to minimise installation errors.

#### Options

A horizontal mounting version of this current transformer is also available.



#### Parameters

Primary Current	Burden			Order Code
	Class 0.5 VA	Class 1 VA	Class 3 VA	
150	-	1.5	3	0150
160	-	2.5	3.75	0160
200	1.5	2.5	5	0200
250	2.5	3.75	5	0250
300	4	7.5	10	0300
400	5	10	15	0400
500	6	10	15	0500
600	8	12	15	0600
700	10	15	20	0700
750	10	15	20	0750
800	12	15	20	0800
1000	15	20	25	1000
1200	15	20	25	1200
1250	15	20	25	1250
1500	20	25	30	1500
1600	20	25	30	1600
2000	20	25	30	2000

Available with 5A or 1A Secondary

### Rated Standard

Rated Primary Current ( $I_{pr}$ )	150...2000A
Frequency Range ( $f_R$ )	47...63Hz
Rated continuous over current	1.2 x rated current
Rated short time thermal current ( $I_{th}$ )	<60 $I_n$
Rated dynamic current ( $I_{dyn}$ )	2.5 $I_{th}$
Instrument security factor (FS)	≤5
Rated Secondary output ( $V_{st}$ )	5A or 1A
Accuracy class	Class 0.5, 1 and 3 to IEC/EN61869-2

### Insulation

Insulation type	Dry transformer, air insulation
Highest voltage $U_m$	0.72kV r.m.s.
Rated insulation level	3kV r.m.s. 50Hz/1 min

### Environmental Conditions

Reference temperature	23°C ±1°C
Nominal temperature range	-25°C...50°C
Daily mean temperature	≤30°C
Limit temperature range for storage	-40°C...85°C
Relative humidity	≤85% non condensing

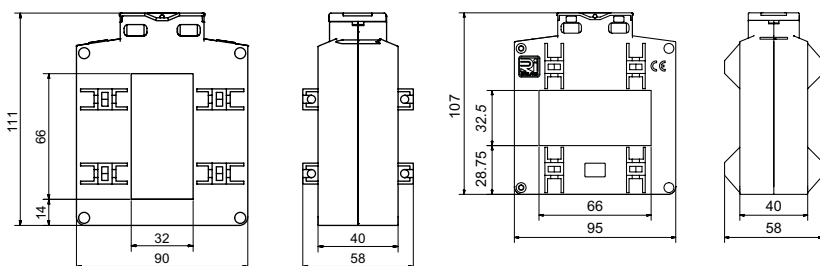
### Housing

Housing material	Self extinguishing polycarbonate
Protection degree (IEC/EN60529)	IP40 housing, Terminals IP20
Mounting	Busbar mounting
Weight	≤650g

### Connections

Primary winding	Passing cable
Secondary winding	Screw clamp connection - 6mm <sup>2</sup> Max.

### Dimensions (mm)



### Information Required with Order

Order example	RI-CT120	5A	0400	- H
Model				
Secondary Current				
Primary Current Range	- See Parameters Table 'Order Code'			
Horizontal Option	- if horizontal mounting is required add suffix '- H'			