

**LUMEL**

**TRANSDUCER  
of TEMPERATURE  
and STANDARD  
SIGNALS  
P20 type**



**USER'S MANUAL**

**CE**



# Contents

---

<b>1. APPLICATION</b> .....	5
<b>2. TRANSDUCER SET</b> .....	5
<b>3. OPERATIONAL SAFETY</b> .....	6
<b>4. INSTALLATION</b> .....	7
4.1. Fitting way .....	7
4.2. External electrical connection diagrams .....	8
<b>5. TRANSDUCER CONFIGURATION BY MEANS OF THE LPCon PROGRAM</b> .....	9
5.1. Configuration of the transducer input type .....	10
5.2. Configuration of the individual analog output characteristic .....	11
5.3. Configuration of the analog output at overflows .....	12
5.4. Readout of the measured value .....	13
<b>6. TECHNICAL DATA</b> .....	15
<b>7. EXECUTION CODES</b> .....	17
<b>8. MAINTENANCE AND GUARANTEE</b> .....	19



# 1. APPLICATION

---

The P20 programmable transducer is designed to convert temperature, resistance, voltage from a shunt and standard signals into a constant-current or constant-voltage standard signal.

The output signal is galvanically isolated from the input signal and supply.

The transducer compensates automatically the resistance of wires in case of resistance value measurements in a three-wire system and automatically compensates the temperature of terminals in case of measurements from thermocouples.

The transducer is fully configurable through the PD14 programmer. By means of this programmer, one can change the input type, the measurement averaging time and rescale the analog output acc. to the individual output characteristic, and also read out the measured value.

# 2. TRANSDUCER SET

---

The set of the P20 transducer is composed of:

- P20 transducer 1 pc.
- User's manual 1 pc.
- Guarantee card 1 pc
- Plug with screw terminals 2 pcs.
- Hole plug of the programmer socket 1 pc

When unpacking the transducer, please check whether the type and execution code on the data plate correspond to the order.

## 3. OPERATIONAL SAFETY

---



In the safety service scope, the transducer meets to requirements of the EN 61010-1 standard.

### **Observations concerning the operational safety**

- All operations concerning transport, installation, and commissioning as well as maintenance, must be carried out by qualified, skilled personnel, and national regulations for the prevention of accidents must be observed.
- Before switching transducer on, one must check the correctness of connections to the network.
- When connecting the supply, one must remember that a switch or a circuit-breaker should be installed in the building. This switch should be located near the device, easy accessible by the operator, and suitably marked as an element switching the transducer off.
- Do not connect the transducer to the network through an autotransformer.
- Before removing the transducer housing, one must switch the supply off and disconnect measuring circuits.
- The removal of the transducer housing during the guarantee contract period may cause its cancellation.
- The programmer socket is only use to connect the PD14 programmer. After the transducer programming, one must insert the hole plug.
- Non-authorized removal of the housing, inappropriate use, incorrect installation or operation, creates the risk of injury to personnel or a transducer damage.

For more detailed information, please study the User's Manual.

## 4. INSTALLATION

---

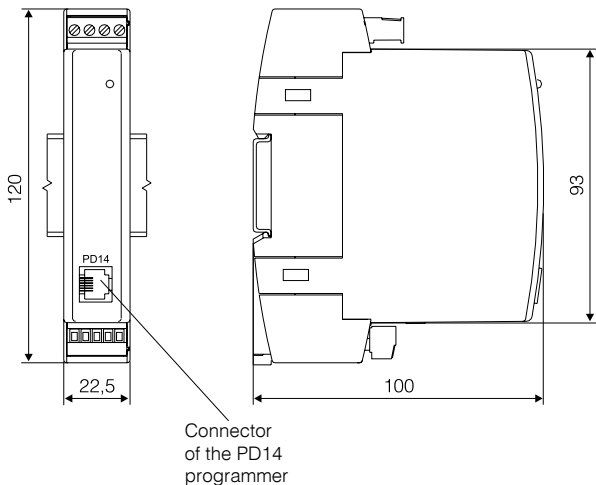
### 4.1. Fitting way

P20 transducers are designed to be mounted on a 35 mm rail according to EN 60715.

The transducer housing is made of a self-extinguishing plastic.

Housing dimensions are: 22.5 x 120 x 100 mm.

On the transducer outside, there are screw or self-locking terminal strips, which make possible the connection of external wires with a 2.5 mm<sup>2</sup> cross-section (supply and output) and up to 1.5 mm<sup>2</sup> (input).

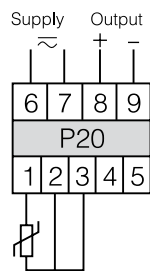


*Fig. 1. Overall dimensions and fitting way of the transducer*

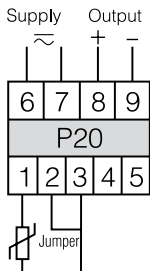
## 4.2. External electrical connection diagrams

The transducer has two sockets of terminal strips, which two plugs with terminal screws are connected to. The way to connect external signals is shown on the fig.1

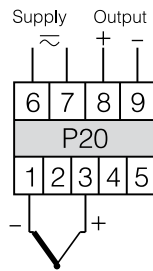
The electrical connection diagram is also situated on the transducer housing. In case of the transducer work in an environment with high interferences, one must apply shielded wires in the transducer input.



RTD in a three-wire system

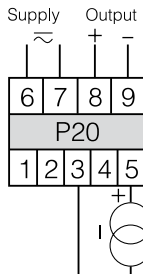
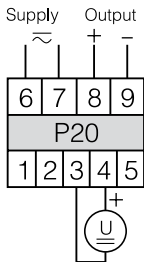


RTD in a two-wire system or resistance measurement



TC or voltage  
- 60... 60 mV  
0... 60 mV  
- 150... 150 mV  
0... 150 mV

Voltage  
- 10... 10 V  
0... 10 V  
0... 5 V



Current  
- 20... 20 mA  
0... 20 mA  
4... 20 mA

**Fig.2. Electrical connection diagrams of the P20 transducer.**



## 5. Transducer configuration by means of the LPCon program

---

The LPCon program is destined for the P20 transducer configuration. One must connect the PC computer through the PD14 programmer and configure the connection choosing **Option -> Connection configuration** from the menu (for the P20 transducer, we choose the address 1, baud rate 9600 kb/s, the mode RTU 8N2 and the appropriate port COM under which the controller of the PD14 programmer has been installed).

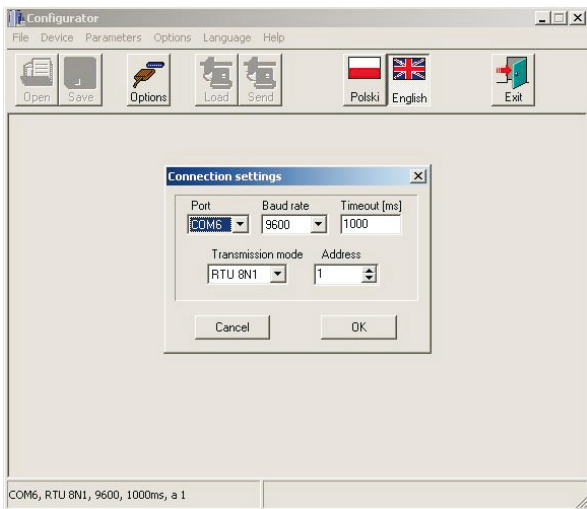


Fig. 3. Configuration of the connection with the P20 transducer.

After the connection configuration, one must choose **Device -> Transducers P -> P20** from the menu, and next click the **Readout** icon in order to read out all parameters. One can also read out parameters individually in each group clicking the **Refresh** push-button.

## 5.1. Configuration of the transducer input type

Three developable lists are accessible in the parameter group “Input configuration”, by means of which, one can choose the input type, the measuring range and the measurement averaging time. One must confirm changes, clicking the **Apply** push-button.

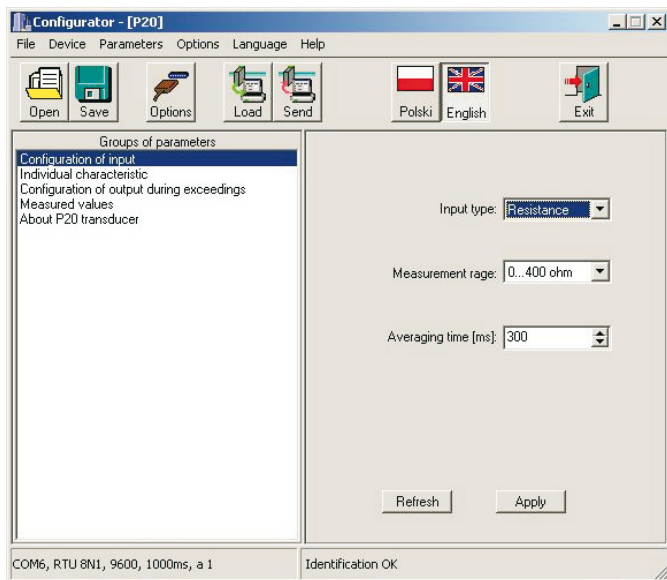


Fig. 4. View of the LPCon program window “Input configuration”

## 5.2. Configuration of the analog output characteristic

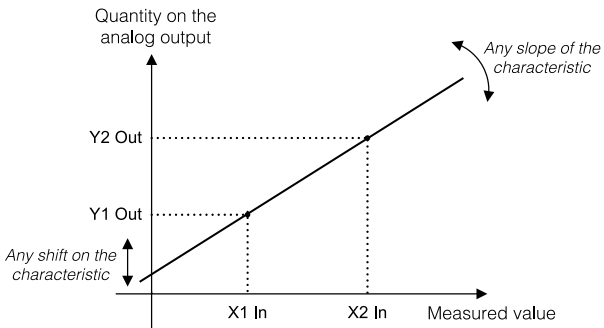
The P20 transducer enables the conversion of measured values into an output signal on the base of the individual linear characteristic of the analog output. On the base of given by the user coordinates of two points, the transducer determines (from the system of equations) coefficients **a** and **b** of the individual characteristic.

$$\begin{cases} Y1\ Out = a \cdot X1\ In + b \\ Y2\ Out = a \cdot X2\ In + b \end{cases}$$

where:

X1 In and X2 In – measured value

Y1 Out and Y2 Out – expected value on the output



The X1 In value on the transducer input  
=> Y1 Out value on the analog output  
The X2 In value on the transducer input  
=> Y2 Out value on the analog output  
Other points of the characteristic are calculated

Fig. 5. Individual characteristic of analog outputs

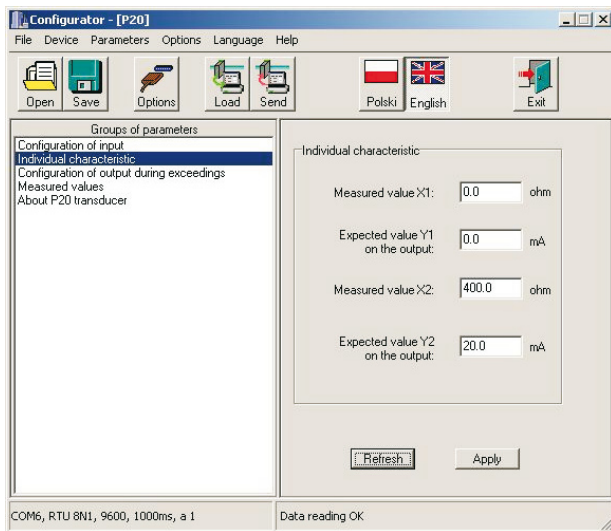


Fig. 6. View of the LPCon program window "Individual characteristic"

### 5.3. Configuration of the analog output at overflows

The user has the additional possibility in the P20 transducer to configure the preservation of the analog output after the signal overflow occurrence on the measuring input. By default, the service of overflows is switched out – then, after the signal overflow on the input, the output is still proportional to the steered up input beyond the basic output range. After switching the overflow service on, the user can define himself by which value the output is to be steered up after the occurrence of the higher or lower overflow.

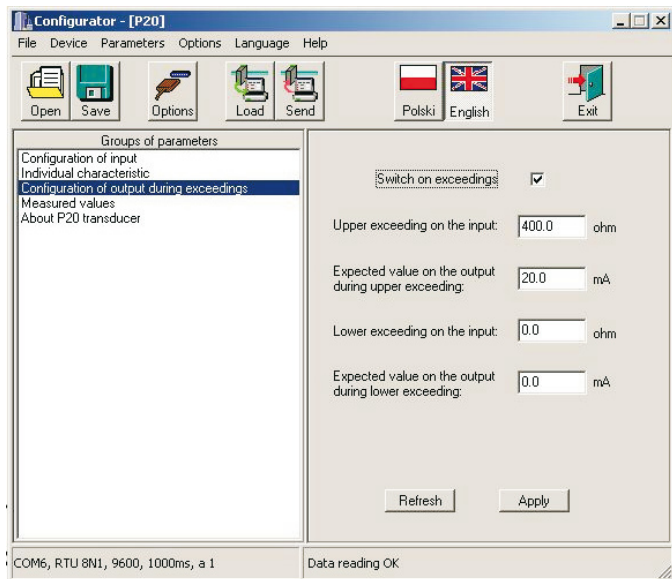


Fig. 7. View of the “Output configuration at overflows” window of the LPCon program.

## 5.4. Readout of the measured value

By means of the LPCon program, one can also read out the actually measured value, check the output type, read out the factory serial number and the programming version. These quantities are located in the **Measured values** window.

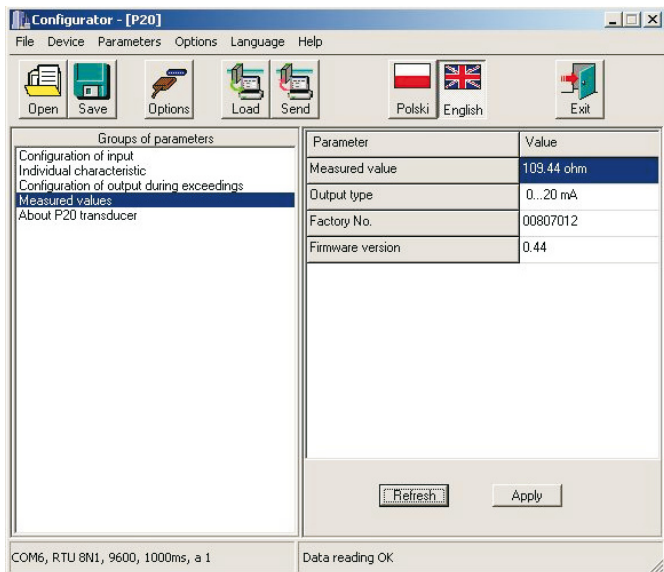


Fig.8. View of the “measured values” window of the LPCon program

## 6. TECHNICAL DATA

---

### Basic parameters:

- analog output galvanically isolated:
  - current 0/4...20 mA
  - voltage 0...10 V
  - maximal load resistance of the current output  $\leq 500 \Omega$
  - minimal load resistance of the voltage output  $\geq 500 \Omega$
- accuracy class<sup>1)</sup> 0.2
- averaging time of the transducer:
  - range: d.c. current [mA], d.c. voltage [V]  $\geq 0.1$  s
  - other ranges  $\geq 0.3$  s
- consumption < 3 VA
- preheating time of the transducer 10 min
- transducer response time:
  - range: d.c. current [mA], d.c. voltage [V]  $\geq 0.2$  s
  - other ranges  $\geq 0.4$  s
- current flowing through RTD < 0.2 mA
- resistance of wires connecting RTD with the transducer  $\leq 10 \Omega$

### Rated operating conditions:

- supply depending on the execution code 85... 253 V a.c./d.c.  
20... 40 V a.c./d.c.
- frequency of the supply a.c. voltage 45... 65 Hz
- ambient temperature – 20...23...55°C
- storage temperature – 25...85°C
- related air humidity < 95% (condensation inadmissible)
- working position any

**Input parameters:**

- resistance of voltage input [V]  $> 1 \text{ M}\Omega$
- resistance of current input [mA]  $12 \Omega \pm 1\%$

**Sustained overload:**

- TC and RTD  $1.1 X_n$
- voltage, current and resistance  $1.3 X_n$

**Short duration overload:**

- voltage input  $5 U_n$
- current input  $10 I_n$

**Ensured protection level  
acc. to EN 60529:**

- housing IP 40
- from terminal side IP 20

**Dimensions:**

22.5 × 100 × 120 mm

**Weight:**

0.125 kg

**Fitting**

on a 35 mm DIN rail,  
acc. to EN 60715

**Electromagnetic compatibility:**

- noise immunity EN 61000-6-2
- noise emission EN 61000-6-4

**Safety requirements acc. to EN 61010-1:**

- installation category III
- pollution degree 2
- phase-to-earth working voltage:
  - supply  $300 \text{ V}^{2)}$
  - input 50 V
  - output 50 V
- altitude above sea level  $< 2000 \text{ m}$

---

1) A part of sub-ranges for thermocouples and RTD has a specified individual class – see table 3

2) Execution for supply voltage 230 V.



## 7. EXECUTION CODES

Execution codes of the P20 transducer

Table 2.

TRANSDUCER	P20 -	X	X	XX	XX	X
<b>Analog outputs:</b>						
current 0... 20 mA.....		1				
current 4... 20 mA.....		2				
voltage 0... 10 V .....		3				
<b>Supply:</b>						
85...253 V a.c./d.c. ....		1				
20...40 V a.c./d.c. ....		2				
<b>Kind of input</b>						
see table 3.....					XX	
<b>Execution:</b>						
standard .....						00
custom-made* .....						XX
<b>Acceptance tests:</b>						
without extra quality requirements .....						8
with an extra quality inspection certificate.....						7
acc. to customer's requirements* .....						X

\* after agreeing with the manufacturer

Type of sensor/input	Range [°C]	Kod			
Pt100 RTD	-200...850	01	TC of K type	-200...1200	36
	0...850	02		0...1200	37
	0...600	03		0...1000	38
	0...400	04		0...800	39
	0...200	05		0...600	40
	-200...200	06		0...400*	41
	-100...100*	07		-200...200*	42
Pt250 RTD	-200...850	08	TC of S type	0...1760	43
	0...850	09		0...1600	44
	0...600	10		0...1400*	45
	0...400	11		0...1200*	46
	0...200	12	0...1000*	47	
	-200...200	13	TC of N type	-200...1200	48
	-100...100	14		0...1200	49
		0...1000		50	
Pt500 RTD	-200...850	15		0...800	51
	0...850	16		0...600*	52
	0...600	17		0...400*	53
	0...400	18		-200...200*	54
	0...200	19	d.c. voltage	0...10 V	55
	-200...200	20		0...5 V	56
	-100...100	21		-10...10 V	57
		-5...5 V		58	
Pt1000 RTD	-200...850	22		0...60 mV	59
	0...850	23		-60...60 mV	60
	0...600	24		-0...150 mV	61
	0...400	25		-150...150 mV	62
	0...200	26	d.c. current	0...20 mA	63
	-200...200	27		4...20 mA	64
	-100...100	28		0...5 mA	65
				-20...20 mA	66
TC of J type	-200...1200	29	Resistance	0...400 Ω	67
	0...1200	30		0...4000 Ω	68
	0...1000	31	Custom-made execution		XX
	0...800	32			
	0...600	33			
	0...400*	34			
	-200...200*	35			

\* accuracy class 0,5

### Example of order:

When ordering, please respect successive code numbers.

The code: **P20-1.1.04.00.7** means:

**P20** – transducer of temperature and standard signals

**1** – with current analog output: 0...20 mA,

**1** – voltage supply: 85...253 V a.c./d.c.,

**04** – Pt100 input signal, 0...400°C range,

**00** – standard execution

**7** – with an extra quality inspection certificate

## 8. MAINTENANCE AND GUARANTEE

---

The P20 transducer does not require any periodical maintenance.

In case of some incorrect operations:

**After the dispatch date and in the period stated in the guarantee card:**

One should return the transducer to the Manufacturer's Quality Inspection Dept.

If the instrument has been used in compliance with the instructions, we guarantee to repair it free of charge.

The disassembling of the housing causes the cancellation of the granted guarantee.

**After the guarantee period:**

One should turn over the instrument to repair it in a certified service workshop.

Spare parts are available for the period of five years from the date of purchase.

**We reserves the right to make changes in design and specifications of any products as engineering advances or necessity requires.**

## **SALES PROGRAM**

- DIGITAL and BARGRAPH PANEL METERS
- MEASURING TRANSDUCERS
- ANALOG PANEL METERS (DIN INSTRUMENTS)
- DIGITAL CLAMP-ON METERS
- INDUSTRIAL PROCESS and POWER CONTROLLERS
- CHART and PAPERLESS RECORDERS
- 1-PHASE and 3-PHASE WATT-HOUR METERS
- LARGE SIZE DISPLAY PANELS
- ELEMENTS OF INTEGRATION SYSTEMS
- ACCESSORIES for MEASURING INSTRUMENTS (SHUNTS)
- CUSTOM-MADE PRODUCTS ACCORDING CUSTOMER'S REQUIREMENTS

## **MEASUREMENT CONTROL RECORDING**

### ***WE ALSO OFFER OUR SERVICES IN THE PRODUCTION OF:***

- ALUMINIUM ALLOY PRESSURE CASTINGS
- PRECISION ENGINEERING and THERMOPLASTICS PARTS
- SUBCONTRACTING of ELECTRONIC DEVICES (SMT)
- PRESSURE CASTINGS and OTHER TOOLS

### ***QUALITY PROCEDURES:***

***According to ISO 9001 and ISO 14001 international requirements.***

All our instruments have CE mark.

For more information, please write to or phone our Export Department



**Lubuskie Zakłady Aparatów Elektrycznych LUMEL S.A.**

ul. Sulechowska 1, 65-022 Zielona Góra, Poland

Tel.: (48-68) 329 51 00 (exchange)

Fax: (48-68) 329 51 01

e-mail: [lumel@lumel.com.pl](mailto:lumel@lumel.com.pl)

<http://www.lumel.com.pl>

**Export Department:**

Tel.: (48-68) 329 53 02

Fax: (48-68) 325 40 91

e-mail: [export@lumel.com.pl](mailto:export@lumel.com.pl)