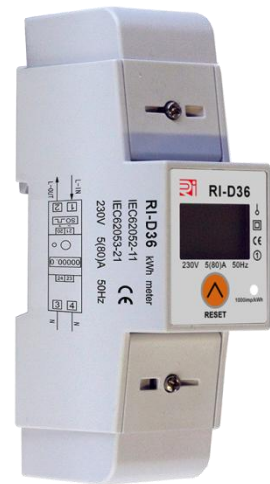


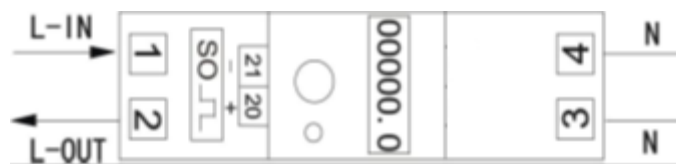
## RI-D36-80-P 230V 5/80A LCD

### Single Phase Energy Meter – 80A Direct With Pulse Output

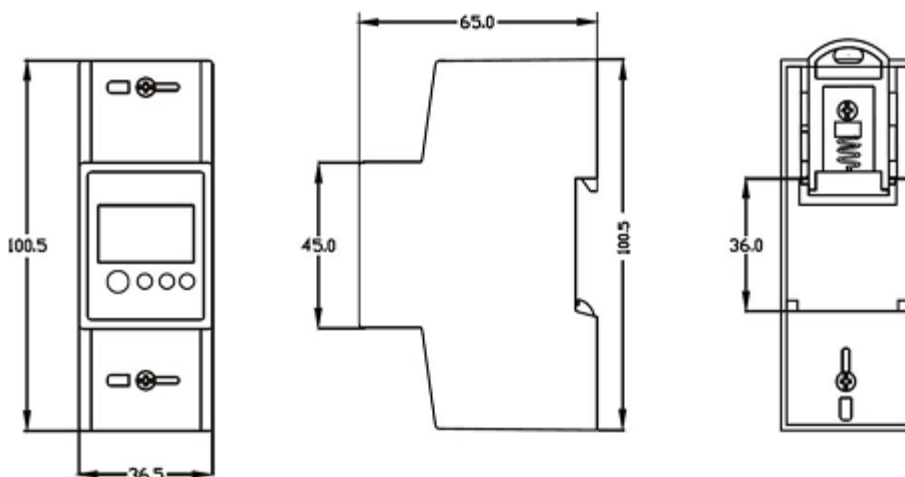
<b>Current Range</b>	5/80A
<b>Voltage Range</b>	230V
<b>Impulse Constant (Red LED)</b>	1000 Imp/kWh
<b>Accuracy Class</b>	1
<b>Frequency</b>	50/60 Hz
<b>Display</b>	LCD 5+1=99999.9kWh
<b>LCD Total Energy</b>	Forward / Reverse
<b>Temperature Range</b>	-20°C to 55°C
<b>Max. Relative Humidity</b>	75% Average / Short time value 95%
<b>Standards</b>	EN62052-11 / EN62053-21
<b>Power Of Consumption</b>	≤0.4W, 8VA
<b>Pulse Output</b>	1000 Imp/kWh RL =1 Wh/Imp RA= 1 Wh/Imp
<b>Pulse Width</b>	90mS
<b>Max. Terminal Wire mm<sup>2</sup></b>	10mm <sup>2</sup>



KWh count resettable via front panel button



Connection Diagram



**Please Note**

Installation of this device may only be performed by qualified personnel.

**Technical support**

In case you have any questions about our product, please contact Rayleigh Instruments on 01268749300.

**Attention**

The Meter housing is sealed. Warranty is void if the seal is broken or removed